

MONTHLY MEMBERSHIP PROGRESS REPORT

LOCATION PENNSYLVANIA

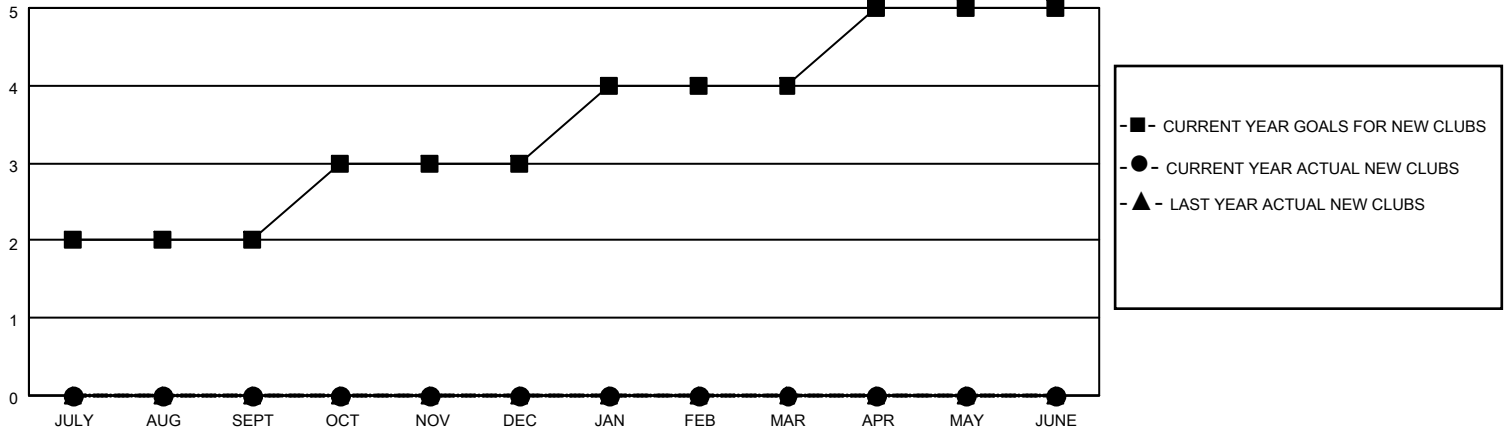
District 14 W

Results as of: 8/31/2020

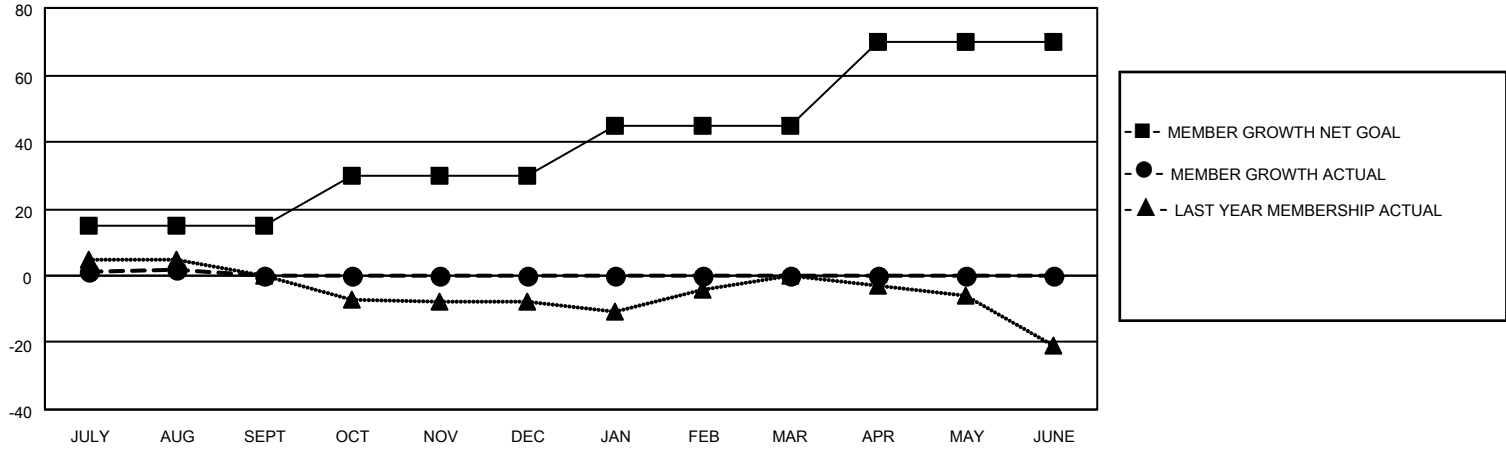
| Clubs | | | |
|-----------------------|---------------|-----------|---------------|
| RESULTS FOR 2020-2021 | | | |
| QUARTER | NEW CLUB GOAL | NEW CLUBS | DROPPED CLUBS |
| JULY/AUG/SEPT | 2 | 0 | 0 |
| OCT/NOV/DEC | 1 | 0 | 0 |
| JAN/FEB/MAR | 1 | 0 | 0 |
| APR/MAY/JUNE | 1 | 0 | 0 |

| Members | | | |
|-----------------------|------------------------|----------------------|---|
| RESULTS FOR 2020-2021 | | | |
| QUARTER | MEMBER GROWTH NET GOAL | MEMBER GROWTH ACTUAL | DROPPED MEMBERS ACTUAL (including transfers) |
| JULY/AUG/SEPT | 15 | 6 | 4 |
| OCT/NOV/DEC | 15 | 0 | 0 |
| JAN/FEB/MAR | 15 | 0 | 0 |
| APR/MAY/JUNE | 25 | 0 | 0 |

GOALS AND ACTUAL NEW CLUBS CUMULATIVE



GOALS AND ACTUAL MEMBERS CUMULATIVE



| | | |
|--|---|--|
| DROPPED CLUBS: 0 | 3 CLUBS OF 31 ADDED 1 OR MORE NEW MEMBERS | <u>GENDER DISTRIBUTION</u> MALE 465 (72.88%) FEMALE 173 (27.12%) |
| <u>DROPPED MEMBERS</u> DECEASED 0 CLUB CANCELLED 0 OTHER 4 TOTAL 4 | CLICK HERE FOR CUMULATIVE MEMBERSHIP DATA | TOTAL FAMILY UNIT MEMBERS 73 FAMILY MEMBERS PAYING HALF DUES 39 |